

**LET US BE *RESILIENT* IN OUR *VOYAGE***  
**FOR A *PERPETUAL* TONGA**  
***JULY NEWSLETTER 2020***



**Mission:** *To establish and promote highest standard of professionalism and good work relationship with all stakeholders.*

**Vision:** *To be recognized as the best Ministry amongst all Government ministries.*

**Values:** *Leadership, Transparency, Accountability, Integrity, Honesty, Respect, Commitment, Responsive, Fairness*



# Customs & Trade Division Legal Unit

## Court Summons

The Legal Unit resumes work for the recovery of unpaid customs duty by importers who has failed to follow through with their payment by instalment agreement. This particular recovery of customs duty is our last resort to recover payments of customs duty. The preparation of Court Summons and setting a date for hearing at the Magistrate Court. Public is hereby informed that we have resumed this process and that proper customs duty should be paid or contact our office for settlement of debt before court hearing.



## Chief Commissioner of Revenue

### Written Ruling

As of 1<sup>st</sup> July 2020, the Chief Commissioner of Revenue, issued a written ruling on the application of excise tax on a particular gazetted Order-In-Council for the importation of fuel. The written ruling clarified the application of excise tax rate on the import of fuel where a particular fuel tanker vessel arrived in Tonga before the effective date of the Order-In-Council but was processed on the effective date of the new policy. Therefore, an urgent written ruling was required to clarify the proper discretion on the application of the new revenue policy.

## Customs Trade Policy

The new financial year comes with new revenue policies issued by the Ministry of Revenue and Customs to assist the public in this period of the COVID 19 pandemic and ensure government priorities are met. It is important for the public to be aware of variations in consumption tax rates, excise tax rates and customs duty that is applied or is exempted to certain tariff items. Also the prohibitions of lamb and mutton breasts and the restriction of the import of passenger vehicles. All necessary details regarding these policies have been gazetted and available at the Attorney General's website <https://ago.gov.to/cms/>.

The Legal Unit offers their well wishes to the public and our constant support for the protection of our borders and the facilitation of legal trade.

#### Tobacco and Cigarettes

- Increase Excise Tax of Imported cigarettes from \$600/kg to \$750/kg.
- Increase Excise tax of Locally Manufactured cigarettes made from imported Tobacco from \$500/kg to \$580/kg.
- Impose Excise Tax of \$100/kg on Locally manufactured cigarettes Made from locally grown Tobacco (Tapaka Tonga)

#### Motor Vehicles

- Reduction of Excise Tax on Vehicles of Chapter Heading 8703.
- Vehicles with a CC between 0-1500  
Reduce from 50cents/cc to 35cents/cc
  - Vehicles with a CC between 1501-3000  
Reduce from 75cents/cc to 50cents/cc
  - Vehicles with a CC exceeding 3000  
Reduce from \$1.00/cc to 75cents/cc.
- Prohibitions:**  
Starting 01/10/2020  
All Imports of Motors vehicles with a model year older than 15 Years will be prohibited.

#### Meat of Lamb and Mutton

- Reduce Excise Tax on Lamb Flaps to Free.
  - Impose Tax of \$1.15/kg on Mutton Flaps.
- Prohibitions:**  
Starting 01/07/2020  
All imports of meat of Mutton breast and Lamb breast will be prohibited

#### NEW RATES AND EXEMPTION ON FUEL



- Increase of Excise Tax on Imported Fuel from 65 cent per lt to 75 cents per lt.
- Exemption of Excise and CT on fuel of a maximum of 400lt per month per Community Electricity Supply Scheme. (Gazette #19)

#### EXTENSION OF COVID19 RELIEF -Food and Personal Hygiene



- Exemption of Duty, Excise and CT on All Imports of food-items and goods for personal Hygiene. (Gazette#16&17)

##### Conditions:

- Must be imported by a private importer.
- All goods are not intended for commercial purposes.

**Extend from 1st July 2020- 31st December 2020**

#### IMPORTS OF GOODS FOR COMBATTING COVID19



- Exemption of Duty, Excise and CT on Goods imported which directly concerns measures taken to combat the spread and possible spread of novel coronavirus disease (COVID-19) in Tonga.
- Goods include but not limited to medical masks, disinfectants, gloves, protective clothing.
- Other goods not specified above will need to be verified and endorsed by Ministry of Health.
- No Time Limit for these exemptions.
- Gazette # 13,14,15 dated 27th March 2020.

#### BUILDING MATERIALS



- Exemption of Duty and CT all building materials for the construction of private dwellings, community project buildings and education project buildings. (Gazette #21)

##### Conditions:

- Private Dwellings: Building Materials for private dwellings must be imported by a private importer.
- Education/ Community Project: Goods must be imported specifically for the community or education project building.

**End date:31st December 2020**

#### TOURISM INCENTIVES



- Exemption of Duty, CT and Excise on Capital Goods for Licensed Tourism Business Operators. (Gazette #25)
- Increase CIF Value Threshold from TOP100,000 to TOP500,000 per tourism operator.
- No Date Limit for these exemptions.

##### Conditions:

- All imports will require Confirmation and Endorsement from Ministry of Tourism before being processed by Customs.

# VIRTUAL MEETINGS

## TAX POLICY MISSION VIRTUAL MEETING



Ministry of Revenue and Customs hosted a virtual meeting led by Mr. Peter Mullins from Fiscal Affairs Department (Tax Policy Mission), IMF on the 16th July, 2020. Mr Mullins provided an update on the main

findings from the remote mission conducted by IMF on a crucial topic: "Tonga, A Road Map to reduce Tax Exemptions".



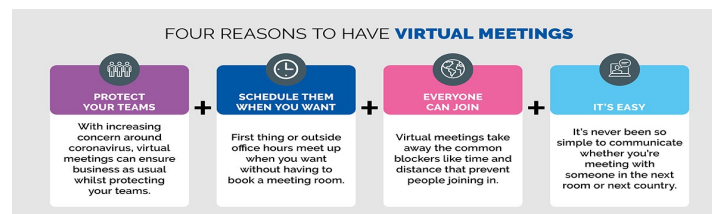
## PITAA EXECUTIVE COMMITTEE MEETING.

The Acting Deputy Chief Executive Officer, Mrs. Pipiena Tanaki of the Ministry of Revenue and Customs (Revenue Division) participated in a Virtual Meeting led by the Mr Vice Chair, Mr George Mow from Fiji Revenue & Customs Services. The Heads from Cook Islands, Papua New Guinea, Vanuatu and staff from the PITAA Secretariat also joined this meeting. Mrs. Koni Ravono, the Head of Secretariat provided an update to the committee members on PITAA Secretariat Administration, Capacity Building, Financials, Annual Heads Meeting and Secretariat Remuneration Package.



## "INDUSTRY PARTNERSHIP FOR A BETTER TONGA"

The Ministry of Revenue & Customs acknowledge the continuous assistance provided by PFTAC regardless the travel restrictions due to COVID19. Mr Stan Shrosbree and Mr Jonathan Matthews are working closely with the project team from Revenue Division-Tonga on its new project introduced on the last financial year, the INDUSTRY PARTNERSHIP PROJECT (IPP). The Ministry has initiated the IPP with the Whale Watching and Swimming Industry with the goal of building a relationship to help industry taxpayers understand and meet their tax obligations.



**"Let us be resilient in our voyage for a prosperous Tonga"**

### FOR MORE INFORMATION

The Ministry of Revenue & Customs

#### CONTACT INFO

+676 26-432 / [cst@revenue.gov.to](mailto:cst@revenue.gov.to)



# TAX WEEK SCHOOL AWARENESS PROGRAM 2020



*Tupou College Toloa*



*Takuilau College*



*Queen Salote College*

The Ministry of Revenue and Customs attended various primary and secondary schools across Tongatapu, Vava'u and Ha'apai from the 12th of July to the 17th of August, 2020.

The purpose of our visit was to educate and promote the core responsibilities of the Ministry of Revenue & Customs. Ensuring proper collection of revenue, Maintaining the safety of our Borders and the facilitation of legal trade. Also to highlight our 2020 Tax Week Theme "Let us be resilient in our voyage for a perpetual Tonga".

We extend our gratitude to the following Primary and Secondary Schools for their hospitality and taking time to host the Ministry of Revenue & Customs.



*Beulah Primary School*



*'Apifo'ou College*



*St. Francis of Assisi*

## Tax Week Preparations

"Client Service Team together with the help of the Legal Team supports and offers their assistance to the upcoming tax week by offering their services in different areas. They are responsible for arranging, distributing and conducting all tax week preparations to ensure the theme "Let us be resilient in our voyage for a perpetual Tonga" is widely acknowledged."



**TAX WEEK  
COMMITTEE**



## LIST OF SCHOOLS

### TONGATAPU

#### PRIMARY SCHOOLS

- \*Ngele'ia Primary School
- \*Tonga Side School (Ngele'ia)
- \*Popua Primary School
- \*Ma'ufanga Primary School
- \*Havelu Primary School
- \*Atelesi'i Primary School
- \*Tokomololo Primary School
- \*Veitongo Primary School
- \*Longoteme Primary School
- \*Vaini Primary School
- \*Folaha Primary School
- \*Fatai Primary School
- \*FWC Nukunuku Primary School
- \*Malapo Primary School
- \*Te'ekiu Primary School
- \*Kanokupolu Primary School
- \*Kolovai Primary School
- \*Nuku'alofa Primary School
- \*Kolomotu'a Government School
- \*Hofoa Primary School
- \*Longolongo Primary School
- \*Ocean of Light
- \*St. Francis of Assisi

#### HIGH /TERTIARY SCHOOL

- \*Beaulah College
- \*Queen Salote College
- \*Tupou Tertiary Institute
- \*Tupou College Toloa
- \*Apifo'ou College
- \*Takuilau College
- \*Montfort
- \*Ahopaniolo
- \*Tailulu College
- \*St. Joseph Commercial Institute

#### HA'APAI

- \*Tongaleleka Primary School
- \*St. Joseph Community School
- \*Ofamo'oni Christian School

#### VAVA'U

- \*Taoa Primary School
- \*Tefisi Primary School
- \*Longomapu Primary School

**PC- Satolu Tahaono**

**"Let us be resilient in our voyage for a perpetual Tonga"**



## Chief Executive Officer for Revenue & Customs:

Mr. Kelemete Vahe with the following officers within the Ministry who all played a vital role in the demonstration of excellence in this video awards.



**Left to Right :** Mr. Sioeli Tu'ivai , Miss. 'Amelia Tu'ungafasi , Mrs. Leotisia Moli , Mr. Kelemete Vahe , Mr. Maamaloa Fotofili , and Miss Soana Kioa.



**Left to Right :** Mrs. Kalolaine Paletu'a , Mrs. Leotisia Moli , Mr. Taniela Sila , Mr. Maamaloa Fotofili , Mrs. Pipiena Tanaki and Miss Soana Kioa.



**Left to Right :** Miss Soana Kioa , Mrs. Kalolaine Paletu'a , Mrs. Leotisia Moli and Mrs. Pipiena Tanaki.

# MORC - PSC VIDEO AWARDS

Ministry of Revenue & Customs received top prizes for the following awards as a result of the PSC Short Video Competition to commemorate Public Service Month 2020. The Ministry came first in two categories in the video competition which were

1. **COVID 19- Champion** – 1st Place
2. **People's Choice** – 1st Place

It is understood that the Ministry of Revenue & Customs has made major improvements in the year 2020 and aims for further improvements and forward progress in the years to come.



**Acting Chairperson of PSC Tonga Mr. Simione Sefania and the CEO of the Ministry of Revenue and Customs Mr. Kelemete Vahe.**



**Public Service Commission TEAM**

**"Let us be resilient in our voyage for a prosperous Tonga"**



**Revenue Supervisory Meeting with DCEO Remuneration Division – PSC – Tevita Fotu and his team.**



## ***CORPORATE PLAN TEAM***

Thank you Senior Assistant-DCEO Letisia Moli and the Corporate Plan Team for submitting the Revised MoRC CP on time to the National Planning Division (PMO)

There are a few changes within the CP, mainly in the MoRC Priorities as there were no Proposed Costing approved. However, one of our ICT Infrastructure Upgrade's Projects, Sales Register Device Project will still be implemented this financial year and funded within the ministry's current budget. Also funded within the ministry's current budget, COVID-19 is now a world-wide priority so the Ministry had start using Zoom virtual equipment.

Although the Proposed Costing for the ministry's Priorities' Projects were not approved, we have moved the following from the FY2020/21 to the next Financial Year:

<i><b>Priorities</b></i>		<i><b>Proposed Projects</b></i>
1)	Illicit drugs and national security	1.1) War on Illicit Drugs Awareness Campaign
		1.2) Building Investigations and Intelligence Capacities with the assistance of Technical Assistant
		1.3) Joint Agencies Maritime Border Patrol and Surveillance
		1.4) Acquiring Non-intrusive Inspection Technologies
		1.5) Building sufficient Human Resources capacity for Customs war on illicit drugs
2)	Legislative Review	2.1) Implementation and monitoring of Taxation Policy to support fight against NCDs
		2.2) Consumption Tax Review
		2.3) Customs Legislative Review
		2.4) Impose tax on telecommunication sector
3)	ICT Infrastructure Upgrade	3.1) ASYCUDA World Project
		3.2) New Tax System
		3.3) RMS 7 Change request
4)	Business Partnership	4.1) Large Tax Payers Office (LTO)
		4.2) Industry Partnership Project
		4.3) Establishment of Authorized Economic Operator Scheme
5)	Debt Management	Returns and Debt Management Strategy Project
6)	International Conventions	6.1) Accession to International Customs Conventions – Revised Kyoto & HS Conventions
		6.2) Conduct Time Release Study
		6.3) Heads of Pacific Islands Tax Administrators Association (PITAA) Annual Conference
7)	Accreditation of Customs and Tax technical courses	Training & capacity development framework
8)	Office infrastructure	8.1) New Office Building for Revenue
		8.2) New Government complex at Vava'u

# New Financial Year Happy Retreat 20/21 Customer.



**Keynote of the day:** Mr. Tevita Lavemaau the Minister of Revenue & Customs



**Left- Right :** Mr 'Aisea Taumoepeau , Hon. Tevita Lavemaau , Fr. Lutoviko Finau , Dr . Mapa Puloka

The Ministry of Revenue and Customs conducted a retreat for the 20/21 financial year on the 21st of July at Fe'aomoengalu Building. The guest speakers were Mr. 'Aisea Taumoepeau the CEO of Ombudsman Tonga on Good Leadership and Dr. Mapa Puloka on The Psychotically of COVID-19 .The theme of this retreat is **"Let us be resilient in our voyage for a perpetual Tonga .**

"We believe making customers happy is about building remarkable experiences designed to leave them with specific feelings and memories worth sharing" by Robert Dew.

Thank you Simana Kami the owner of the 'Oholei Beach Resort and one of our beloved frontliners Mrs [Muinoa Funaki](#) for being a good Customer

Care 😊



*Mrs. Muinoa Funaki and Simana Kami*

## Talkback Show & Television Programs.

### T.V & TALKBACK SHOWS WEEKLY TIMETABLE

Source	Program	Time	
TBC	Television Program	7:30pm	Every Friday
TBC – AM Station	Talkback Show	10:00am -11:00pm	Every Friday
Radio 88.1FM	Talkback	11:30pm – 12:30pm	Every Friday
Radio 87.5FM	Talkback	1:00am – 2:00pm	Every Friday

Always check out our Televisions and Talkback Shows every week for the latest updates from our Ministry every **FRIDAY**



*Mr. Pita Tu'ivai, Miss Mele Moala and Mr. Taniela Sila.*

## External Trainings



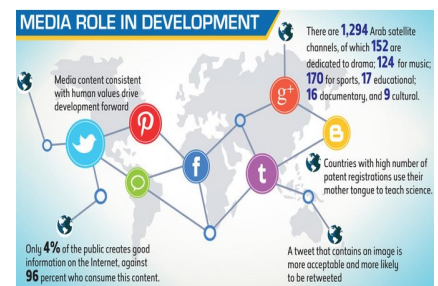
### Embassy of Japan –Tonga

Short training on Income Tax ( Employment PAYE ) with Embassy of Japan—Tonga that was led by Mr. Pita Tu'ivai , Miss 'Etina Moala and Miss Matamoana Savieti that was conducted on 22nd July ,

#### FOR MORE INFORMATION

The Ministry of Revenue & Customs

CONTACT INFO  
+676 26-432 / [cst@revenue.gov.to](mailto:cst@revenue.gov.to)





# REMINDERS



**TIN**  
**Tax Identification Number**

New Employees and New Businesses must apply for TIN from the day you get your Business License and the first date of employment.

**GET TIN APPLICATION**

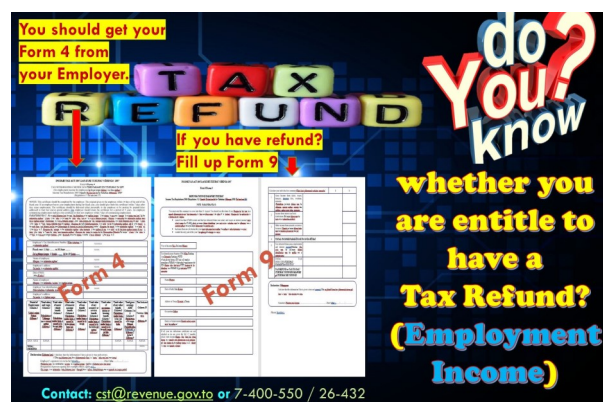
Come directly to our OFFICE @Oneway Road, Queen Salete Ex-Student Building Centre or visit our WEBSITE [www.revenue.gov.to](http://www.revenue.gov.to)

**SUBMIT REQUIREMENTS**

You must submit your valid ID's ( Passport, Birth Certificate, Drive's License and National ID ) and Businesses don't forget your Business License.

**Get it for FREE**

Contact: [cst@revenue.gov.to](mailto:cst@revenue.gov.to) or 7-400-550 / 26-432



**do You know?**

**whether you are entitle to have a Tax Refund? (Employment Income)**

You should get your Form 4 from your Employer.

If you have refund? Fill up Form 9

**Form 4** **Form 9**

Contact: [cst@revenue.gov.to](mailto:cst@revenue.gov.to) or 7-400-550 / 26-432

The Ministry of Revenue and Customs wishes to inform all stakeholders , during this State of Emergency period , we however encourage all taxpayers and tax agents to make electronic payments and correspond with us using email and telephone to avoid interactions, although our counters will still be open for business. Below , you can find here specifically email of any unit in your favour of assistance.

## REVENUE DIVISION CONTACT DETAILS

RESPOSIBILITY	SERVICE	EMAIL
Heilala Tax System	Lodgement,Payment,Information	<a href="mailto:heilala@revenue.gov.to">heilala@revenue.gov.to</a>
Tax payments	Payments	<a href="mailto:payments@revenue.gov.to">payments@revenue.gov.to</a>
Tax Lodgements	Returns	<a href="mailto:lodgements@revenue.gov.to">lodgements@revenue.gov.to</a>
TIN Registration & Application	Tin Application,online lodgement	<a href="mailto:registration@revenue.gov.to">registration@revenue.gov.to</a>
Objections	Tax Objection	<a href="mailto:objections@revenue.gov.to">objections@revenue.gov.to</a>
GST Refunds	CT,PAYE etc...	<a href="mailto:refunds@revenue.gov.to">refunds@revenue.gov.to</a>
Return & Debts	Outstanding return & debts	<a href="mailto:radct@revenue.gov.to">radct@revenue.gov.to</a>
Ha'apai Office	Returns,Payment,etc	<a href="mailto:haapai@revenue.gov.to">haapai@revenue.gov.to</a>
Vava'u Office	Returns,Payment,etc	<a href="mailto:vavau@revenue.gov.to">vavau@revenue.gov.to</a>
Eua Office	Returns,Payment,etc	<a href="mailto:eua@revenue.gov.to">eua@revenue.gov.to</a>
Tax Queries	any other enquiries	<a href="mailto:cst@revenue.gov.to">cst@revenue.gov.to</a>

## CUSTOMS DIVISION CONTACT DETAILS

ESAD Private		<a href="mailto:privateesad@customs.gov.to">privateesad@customs.gov.to</a>
Commercial Unit		<a href="mailto:commercialaesad@customs.gov.to">commercialaesad@customs.gov.to</a>
Warehouse		<a href="mailto:warehouseesad@customs.gov.to">warehouseesad@customs.gov.to</a>



We wish to acknowledge all Government line ministries and to the people of Tonga for their contributions and support towards this edition of

### The Ministry of Revenue & Customs newsletter

“Let is be resilient in our voyage for a perpetual Tonga ”

If you have any queries please do not hesitate to contact us  
Revenue Division

+676 740-0550 / [cst@revenue.gov.to](mailto:cst@revenue.gov.to)

Customs Division

+676 740-0660 / [allstaff@customs.gov.to](mailto:allstaff@customs.gov.to)